



# The 10 Throwbacks Cheat Sheet

## The Kingfish

- Appearance:** looks bigger in the water than he really is  
**Found:** wherever female fish congregate  
**Characteristics:** will tug at your line but hard to hold onto  
**Pointers:** will nibble at your hook as well as the hooks of all the other fisherwomen



## The Barracuda

- Appearance:** has a powerful jaw, hiding fang-like teeth  
**Found:** smaller ponds where he can be the "big fish"  
**Characteristics:** voracious predator whose hunting style is lie-in-wait or ambush  
**Pointers:** when caught on you line, it is nearly impossible to release



## The Perch

- Appearance:** appear more attractive in the water than he really is  
**Found:** wherever they can find other fish to feed on  
**Characteristics:** may be tasty, but very little meat  
**Pointers:** will steal all of your bait and leave you with nothing to show for your efforts



## The Grouper

- Appearance:** colorful and active fish  
**Found:** in large groups at the local "Hot Spot"  
**Characteristics:** lives large and wants to be wherever the action is  
**Pointers:** a real live one! likes to play with the line



## The Slippery Eel

- Appearance:** slick and slimy  
**Found:** murky, troubled waters where other eels hang out  
**Characteristics:** has a ravenous appetite  
**Pointers:** hard to find; good at hiding



## The Flounder

- Appearance:** all bones and no substance; not very active  
**Found:** bottom dweller found in the best and worst fishing holes  
**Characteristics:** never reaches full maturity; one fish you'll wish had gotten away  
**Pointers:** you will work much too hard for what you'll catch

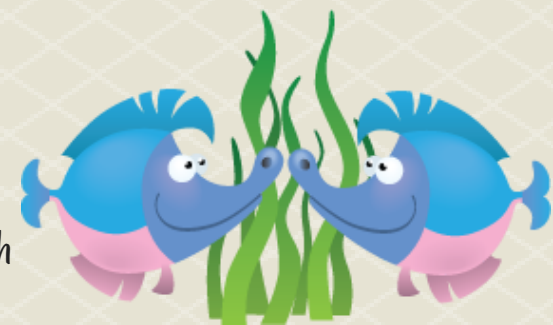


## The Snakefish

- Appearance:** has a dark side; he tries to hide  
**Found:** dark and dangerous waters  
**Characteristics:** will leave a bitter taste in your mouth  
**Pointers:** be careful!!! he can pull you in...hook, line, and sinker

## The Game Fish

- Appearance:** looks are quite deceiving with this fish  
**Found:** loves the wide-open, high seas  
**Characteristics:** enjoys the sport of fishing more than you!!!  
**Pointers:** almost impossible to catch; yanking on the line won't do you any good



## The Shark

- Appearance:** smooth and sleek operator; able to move quickly in the water  
**Found:** open water, but very hard to track  
**Characteristics:** smells fishy around the gills  
**Pointers:** exciting, but illusive; just when you think you've caught him, he is off and running again



## The Cold Fish

- Appearance:** thick scales  
**Found:** chilly to icy waters  
**Characteristics:** limp and clammy to the touch  
**Pointers:** appears disinterested in your line or bait; let's face it, ice fishing is NO FUN!!!

